

Supplementary materials: Figure S1, S2 and S3.



Figure S1. The TOP10 genes of these subpopulations.

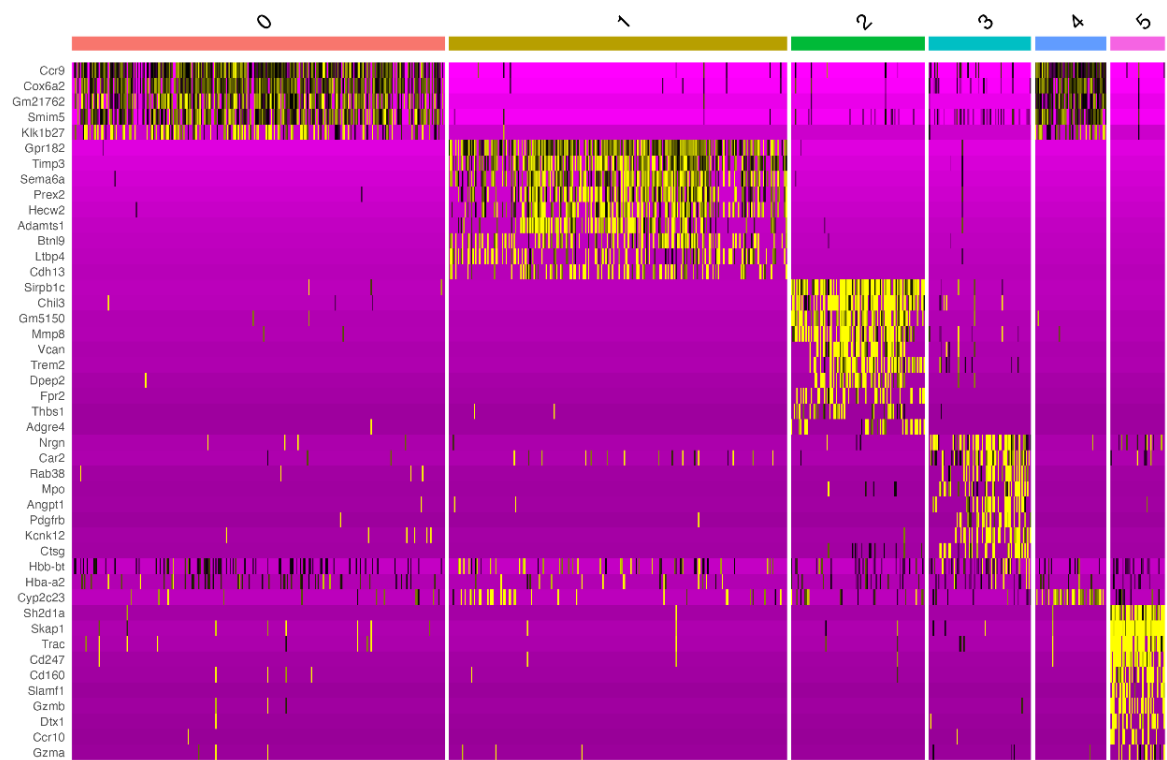


Figure S2. The TOP10 genes of endothelial cells.

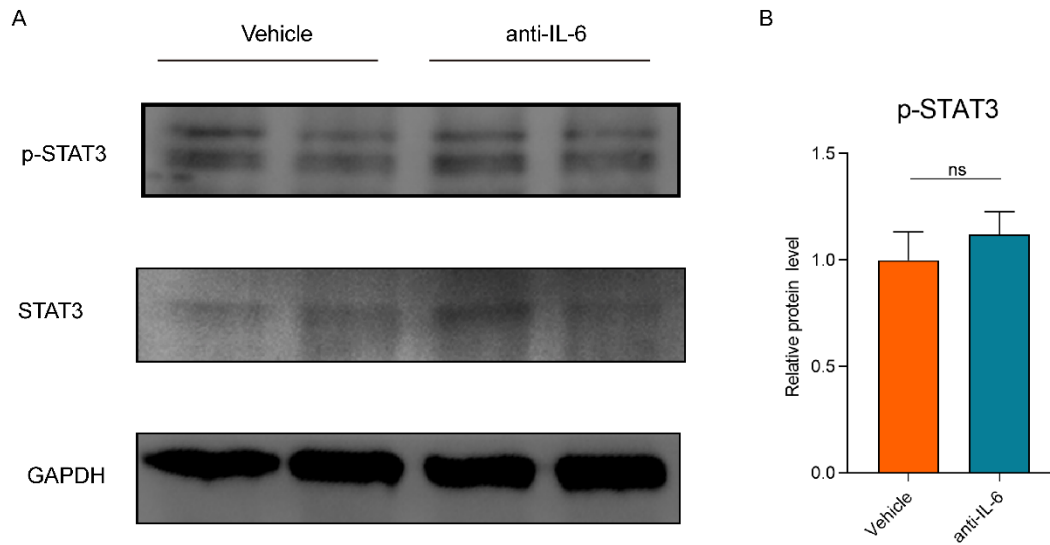


Figure S3. The anti-IL-6 treatment efficiency. A-B: The relative protein level of pSTAT3 in the liver were detected via western blotting on Vehicle and anti-IL-6 groups (n=5 per group, 5 biological replicates from 5 individual animals). These results were obtained from at least three independent experiments. Values are presented as mean  $\pm$  SEM.  $**p < 0.01$ ,  $*p < 0.05$ , ns  $> 0.05$ .

**Table S1 The sequence of the primers for qRT-PCR**

Gene	Species	Forward primer	Reverse primer
<i>IL-6</i>	<i>Mus musculus</i>	5'CTGCAAGAGACTTCCATCCAG3'	5'AGTGGTATAGACAGGTCTGTTGG3'
<i>VEGF-C</i>	<i>Mus musculus</i>	5'GTGAGGTGTGTATAGATGTGGGG3'	5'GTCTTGCTGAGGTAACTGTG3'
<i>GAPDH</i>	<i>Mus musculus</i>	5'CACTGAGCAAGAGAGGCCCTAT3'	5'GCAGCGAAATTTATTGATGGTATT3'
<i>IL-6</i>	<i>Homo sapiens</i>	5'ACTCACCTCTTCAGAACGAATTG3'	5'CCATCTTTGGAAGGTTTCAGGTTG3'