

The Relationship Between Thyroid Function or Subclinical Hypothyroidism in Early Pregnancy and Risk of Low Birth Weight and Small for Gestational Age of The Offspring: A Multicentre Prospective Cohort Study

Juan Li,¹ Minhui Hu,¹ Rong Zhao,² Shuanghua Xie,¹ Shaofei Su,¹ Enjie Zhang,¹ Shuangying Li,¹ Zhan Li,¹ Jianhui Liu,¹ Hao Xing,¹ Ruixia Liu,^{1*} Aris T. Papageorghiou,^{3*} Chenghong Yin.^{1*}

¹ Department of Central Laboratory, Beijing Obstetrics and Gynecology Hospital, Capital Medical University, Beijing Maternal and Child Health Care Hospital, Beijing 100026, China

² Department of Obstetrics, Beijing Obstetrics and Gynecology Hospital, Capital Medical University, Beijing Maternal and Child Health Care Hospital, Beijing 100026, China

³ Nuffield Department of Women's and Reproductive Health, University of Oxford, The Women's Centre, John Radcliffe Hospital, Oxford, UK.

* Corresponding author

Ruixia Liu

Email: liuruixia@ccmu.edu.cn

ORCID: 0000-0001-5835-4424

Tel.: +86-10-52277607. Address: No. 251 Yaojiayuan Road, Chaoyang District, Beijing 100026, China

Aris T. Papageorghiou

Email: aris.papageorghiou@wrh.ox.ac.uk

Tel.: +44(0)20 8725 0071. Address: John Radcliffe Hospital, Oxford, OX3 9DU, UK.

Chenghong Yin

Email: yinchh@ccmu.edu.cn

ORCID: 0000-0002-2503-3285

Tel.: +86-10-85968401. Address: No. 251 Yaojiayuan Road, Chaoyang District, Beijing

100026, China

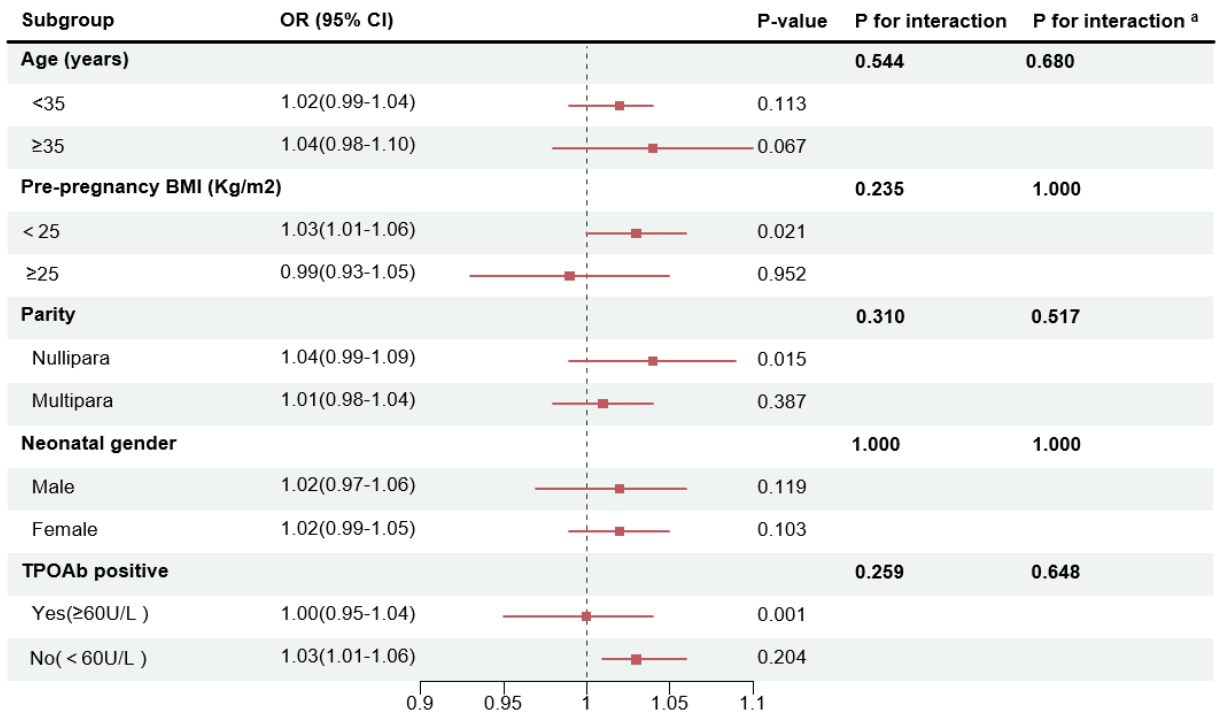


Figure S1 Association between TSH levels and LBW in different subgroup

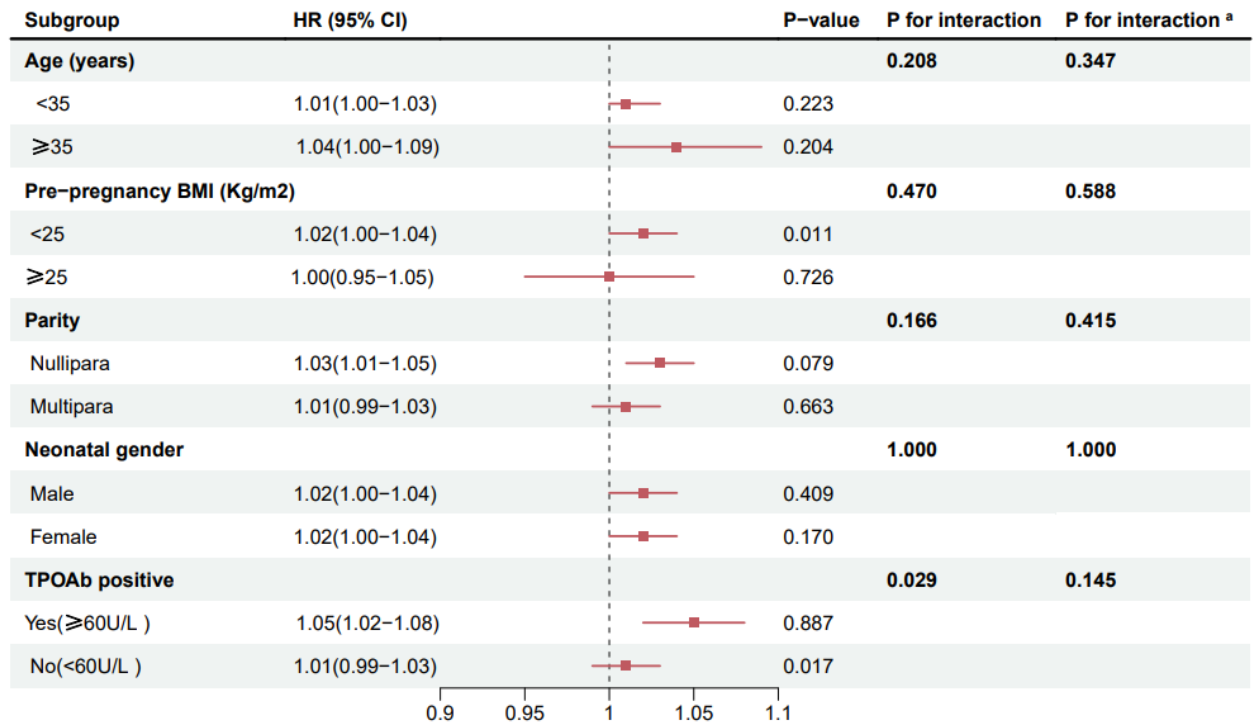


Figure S2 Association between FT4 levels and LBW in different subgroup

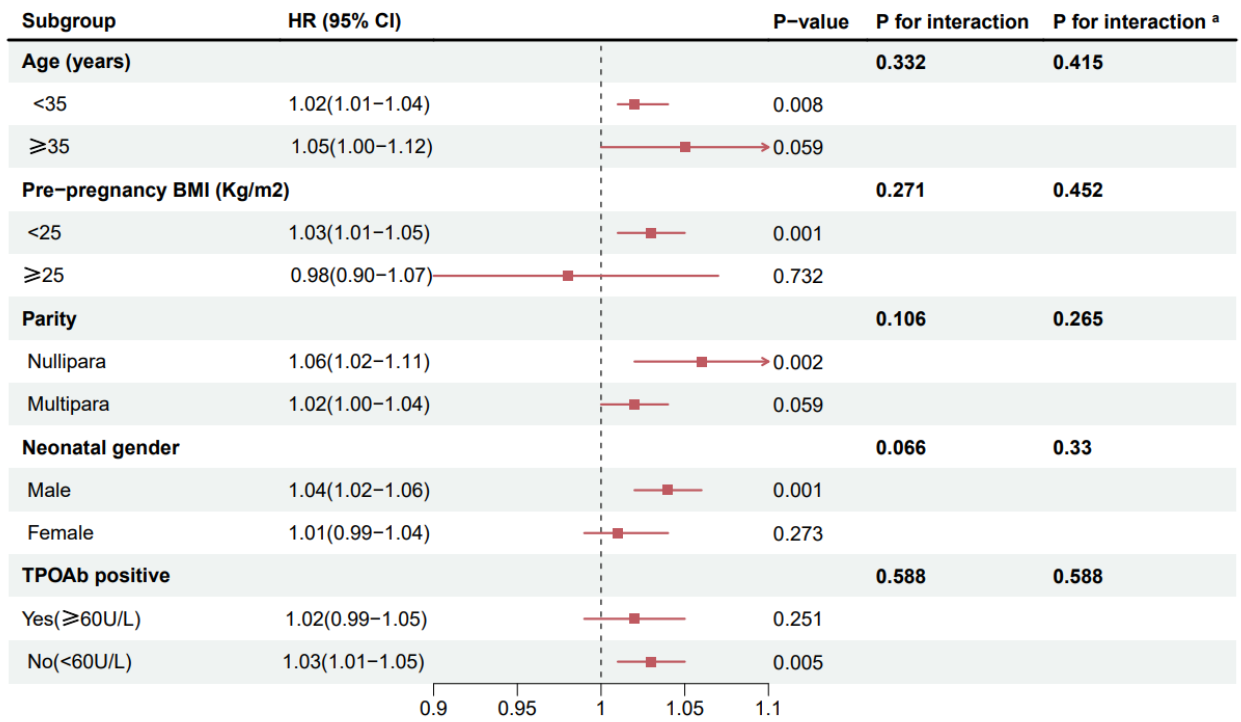


Figure S3 Association between TSH levels and SGA in different subgroup

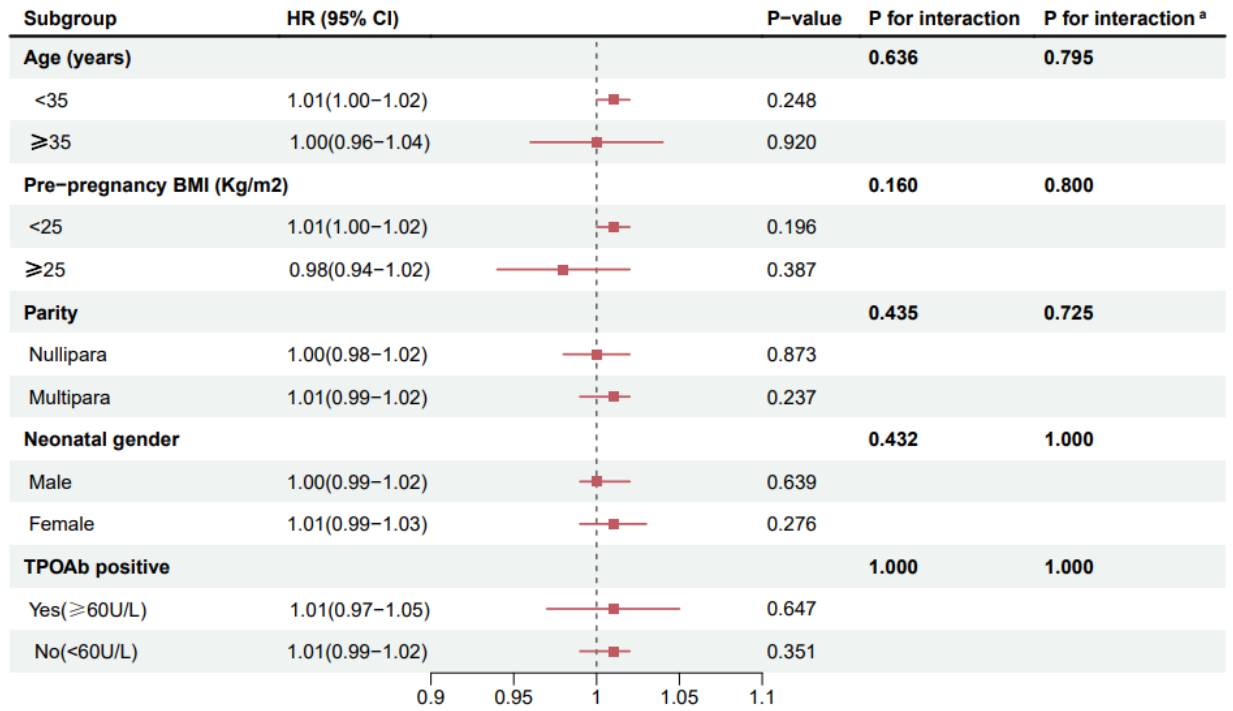


Figure S4 Association between FT4 levels and SGA in different subgroup