

Supplementary materials

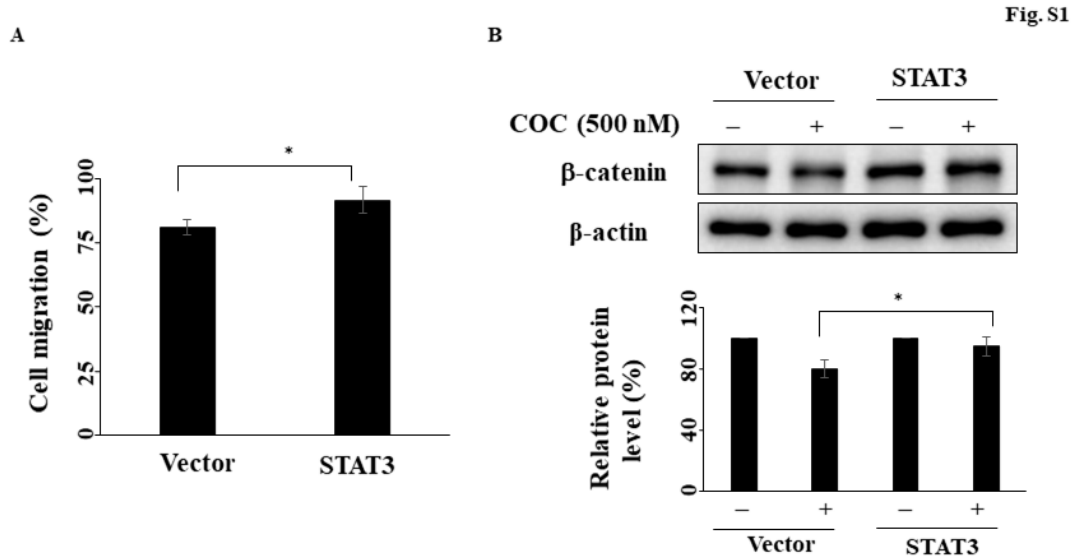


Fig. S1. Effects of STAT3 overexpression on migration in COC-treated cells for 24 h.

(A) Left, cells were treated with COC (250 nM) or DMSO after the transfection of the STAT3-CA-Flag plasmids, and images of wounds were captured by phase contrast microscopy. Magnification x 100. Right, the percentage of cell migration. (B) The levels of β -catenin of COC in STAT3-overexpressing SCC4 cells was assessed by Western blotting. * $P < 0.05$.