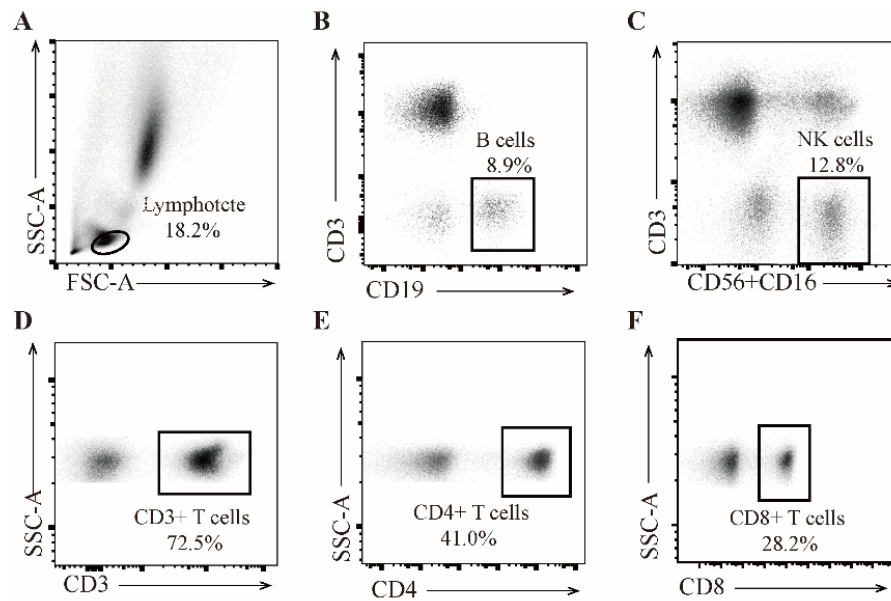


## Supplementary Material

### Prognostic Value of Circulating Lymphocyte Subsets in Cervical Cancer Following Postoperative Radiotherapy

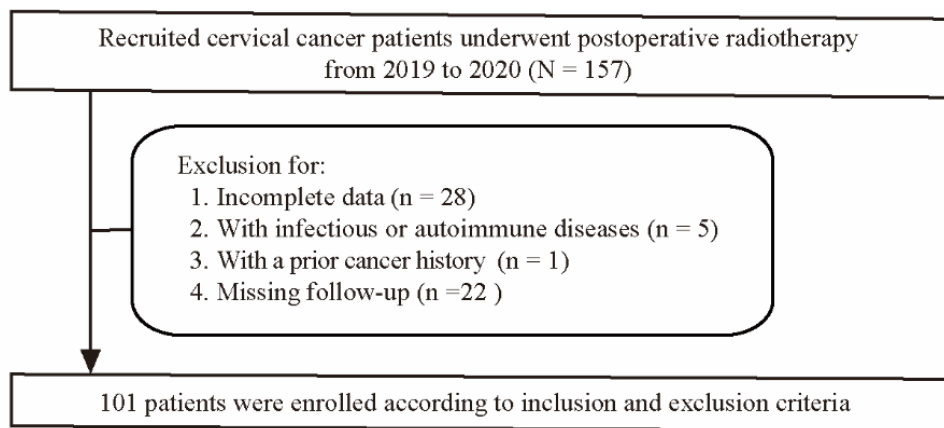
<b>Figure S1</b>	Flow cytometry gating strategy for peripheral blood lymphocyte subsets.	Page 2
<b>Figure S2</b>	Diagram of the study flow.	Page 3
<b>Figure S3</b>	Overall survival for the entire cohort.	Page 4
<b>Table S1</b>	Identification of the optimal cut-off value by using the maximum Youden index.	Page 5

## Supplementary Figure 1



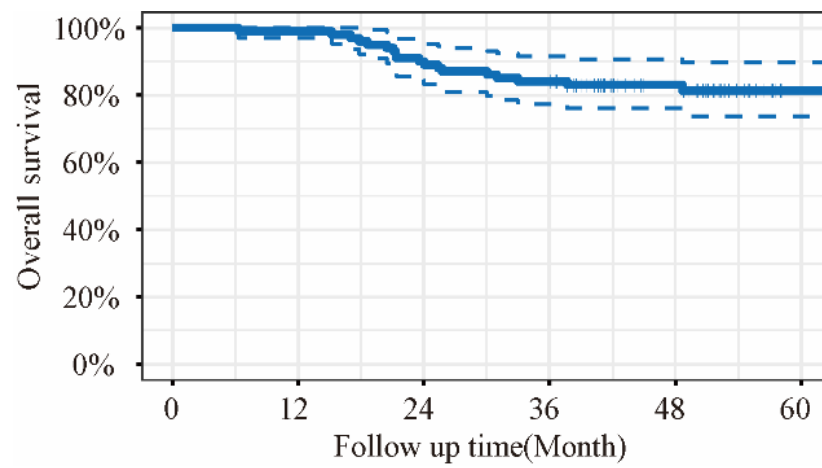
**Supplementary Figure 1.** Flow cytometry gating strategy for peripheral blood lymphocyte subsets. (A) Lymphocytes were selected based on forward and side scatter; (B) peripheral B cells as (CD3-CD19+) were selected; (C) peripheral natural killer (NK) cells (CD3-CD16+CD56+) were selected; (D) Total T cells (CD3+) were selected; (E) CD4+T cells (CD3+CD4+) were selected; (F) CD8+T cells (CD3+CD8+) were selected.

## Supplementary Figure 2



**Supplementary Figure 2.** Diagram of the study flow.

**Supplementary Figure 3**



**Supplementary Figure 3.** Overall survival for the entire cohort.

**Supplementary Table 1. Identification of the Optimal Cut-off Value Using the Maximum Youden Index.**

<b>Peripheral blood lymphocyte subsets</b>	<b>Cutoff value at Max Youden Index</b>	<b>N (%)</b>	<b>Prediction time (months)</b>	<b>AUC value at 36 months</b>
<b>Percentage of lymphocyte</b>			36	0.54
High Group	≥ 26.20	45 (44.6%)		
Low Group	< 26.20	56 (55.4%)		
<b>Percentage of NK cells</b>			36	0.69
High Group	≥ 16.00	41 (40.6%)		
Low Group	< 16.00	60 (59.4%)		
<b>Percentage of Total T cells</b>			36	0.46
High Group	≥ 72.80	53 (52.5%)		
Low Group	< 72.80	48 (47.5%)		
<b>Percentage of CD4+ T cells</b>			36	0.51
High Group	≥ 50.00	10 (9.90%)		
Low Group	< 50.00	91 (90.1%)		
<b>Percentage of CD8+ T cells</b>			36	0.50
High Group	≥ 24.00	70 (69.3%)		
Low Group	< 24.00	31 (30.7%)		
<b>Percentage of B cells</b>			36	0.61
High Group	≥ 11.65	29 (28.7%)		
Low Group	< 11.65	72 (71.3%)		
<b>Lymphocyte count (cells /μL)</b>			36	0.58
High Group	≥ 1600	33 (32.7%)		
Low Group	< 1600	68 (67.3%)		
<b>NK cells count (cells /μL)</b>			36	0.68
High Group	≥ 200	44 (43.6%)		
Low Group	< 200	57 (56.4%)		
<b>Total T cells count (cells /μL)</b>			36	0.57
High Group	≥ 1182	23 (22.8%)		
Low Group	< 1182	78 (77.2%)		
<b>CD4+T cells count (cells /μL)</b>			36	0.56
High Group	≥ 418	44 (43.6%)		
Low Group	< 418	57 (56.4%)		
<b>CD8+T cells count (cells /μL)</b>			36	0.55
High Group	≥ 309	31 (30.7%)		
Low Group	< 309	70 (69.3%)		
<b>B cells count (cells /μL)</b>			36	0.60
High Group	≥ 165	32 (31.7%)		
Low Group	< 165	69 (68.3%)		
<b>Ratio of CD4/CD8</b>			36	0.48
High Group	≥ 1.96	30 (29.7%)		
Low Group	< 1.96	71 (70.3%)		