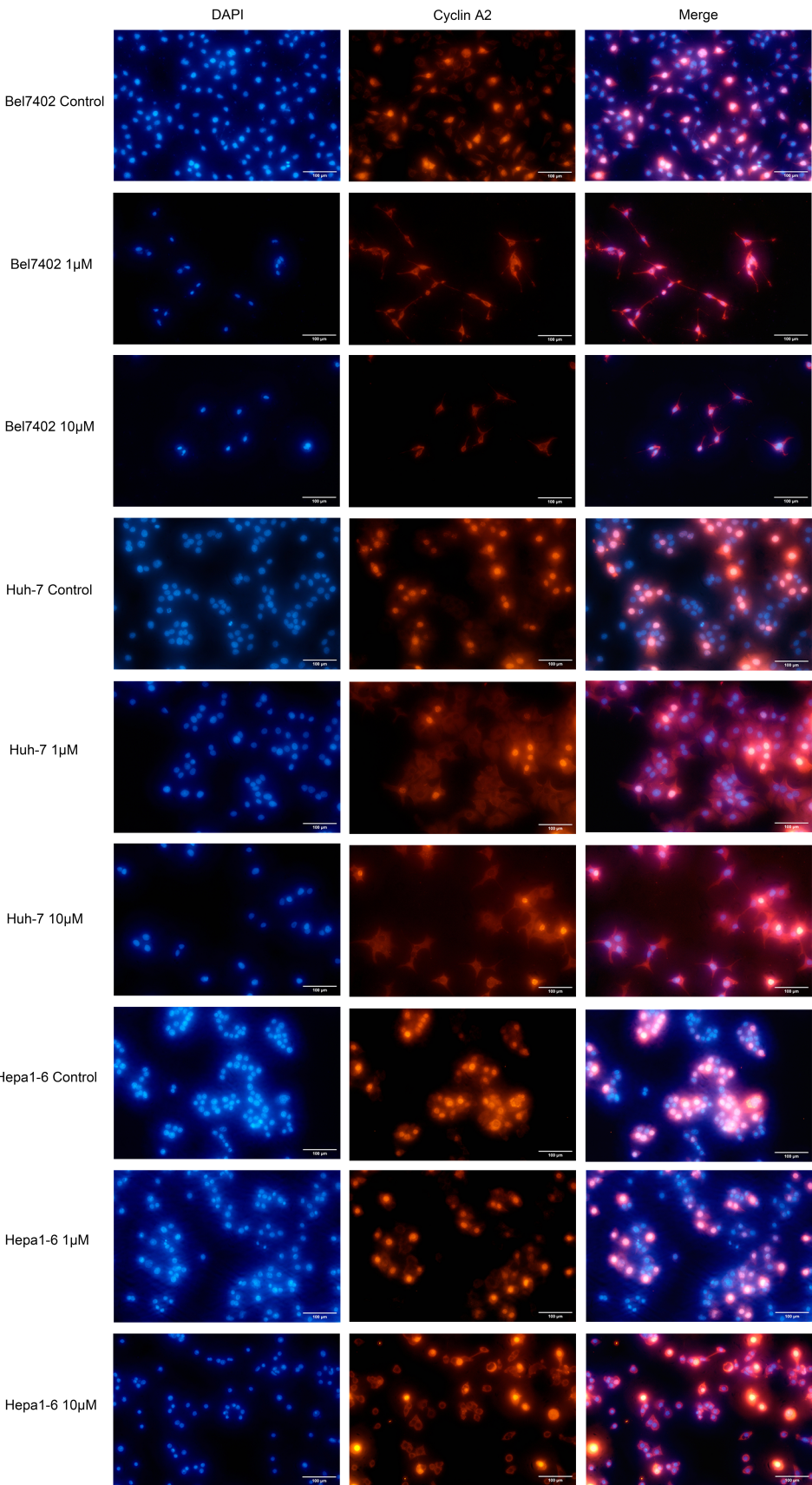


Supplementary Figures. Expressions of cyclin A2 (Supplementary Figure 1), cyclin B1 (Supplementary Figure 2), cyclin D1 (Supplementary Figure 3), cyclin E1 (Supplementary Figure 4), P21 (Supplementary Figure 5), and P27 (Supplementary Figure 6) in Bel7402, Huh-7, and Hepa1-6 cell lines detected using indirect immunofluorescence assay. Nuclei were stained with blue fluorescence by DAPI, and target proteins were labeled with red-fluorescence by Cy3.





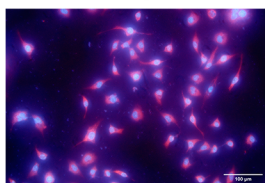
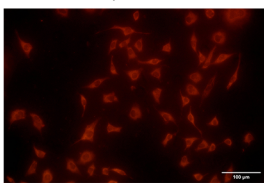
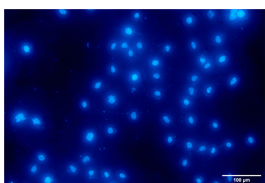


DAPI

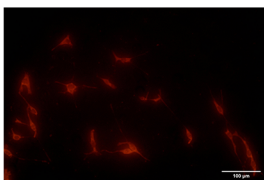
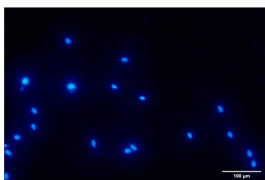
Cyclin D1

Merge

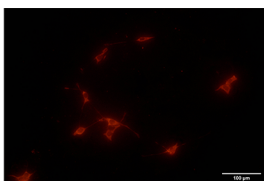
Bel7402 Control



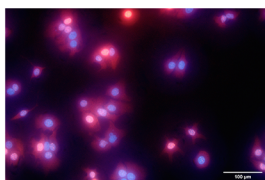
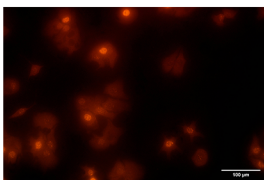
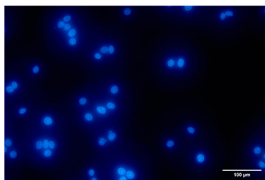
Bel7402 1µM



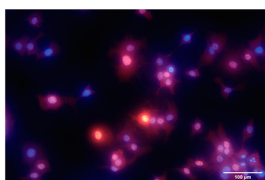
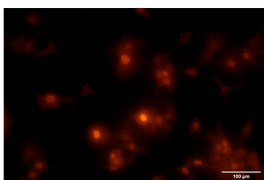
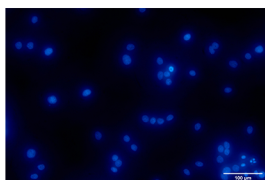
Bel7402 10µM



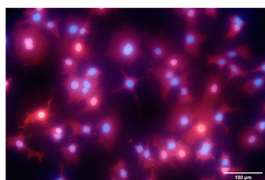
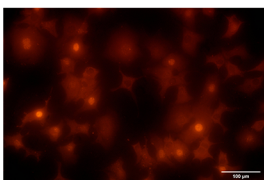
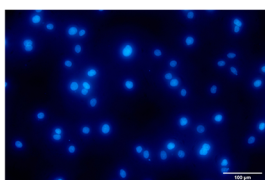
Huh-7 Control



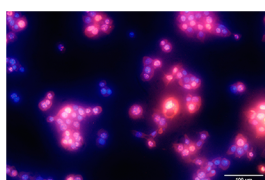
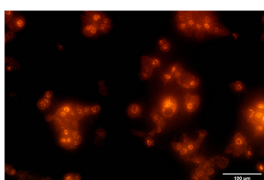
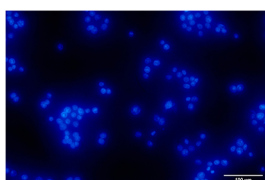
Huh-7 1µM



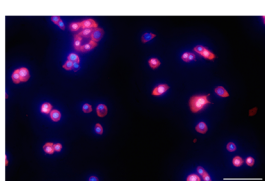
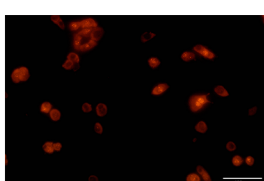
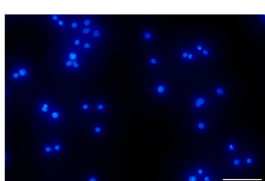
Huh-7 10µM



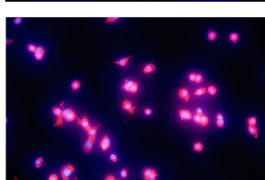
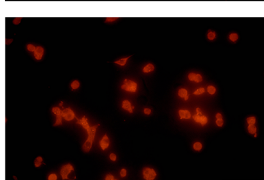
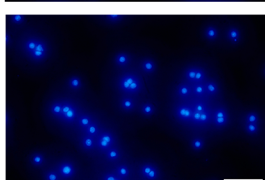
Hepa1-6 Control



Hepa1-6 1µM



Hepa1-6 10µM

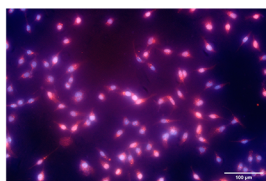
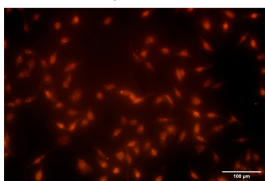
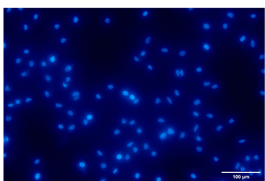


DAPI

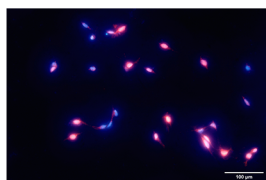
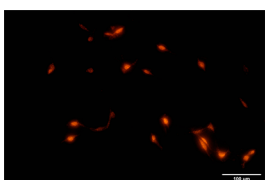
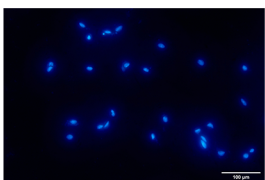
Cyclin E1

Merge

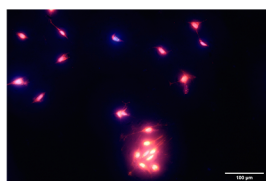
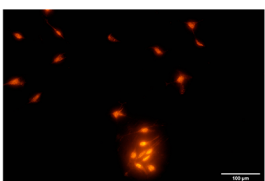
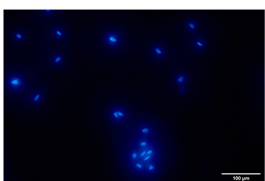
Bel7402 Control



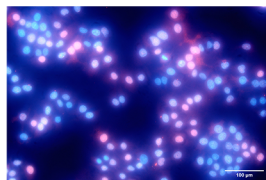
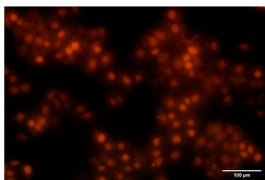
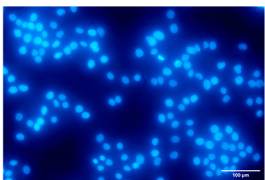
Bel7402 1µM



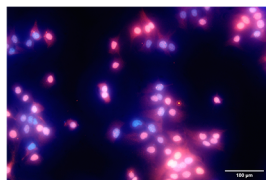
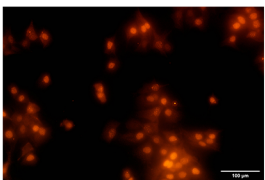
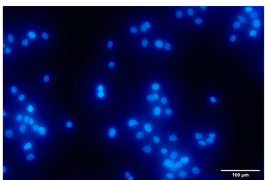
Bel7402 10µM



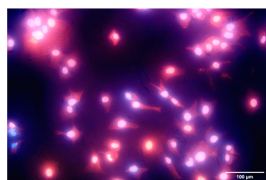
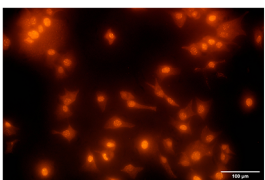
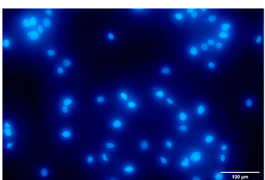
Huh-7 Control



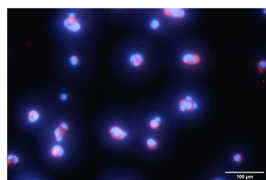
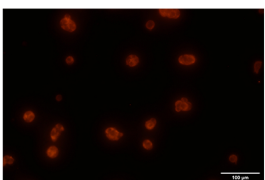
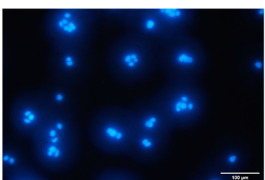
Huh-7 1µM



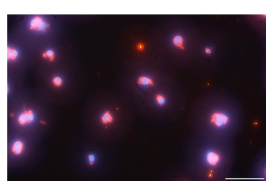
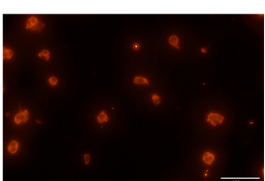
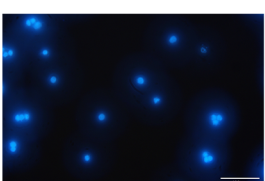
Huh-7 10µM



Hepa1-6 Control



Hepa1-6 1µM



Hepa1-6 10µM

