

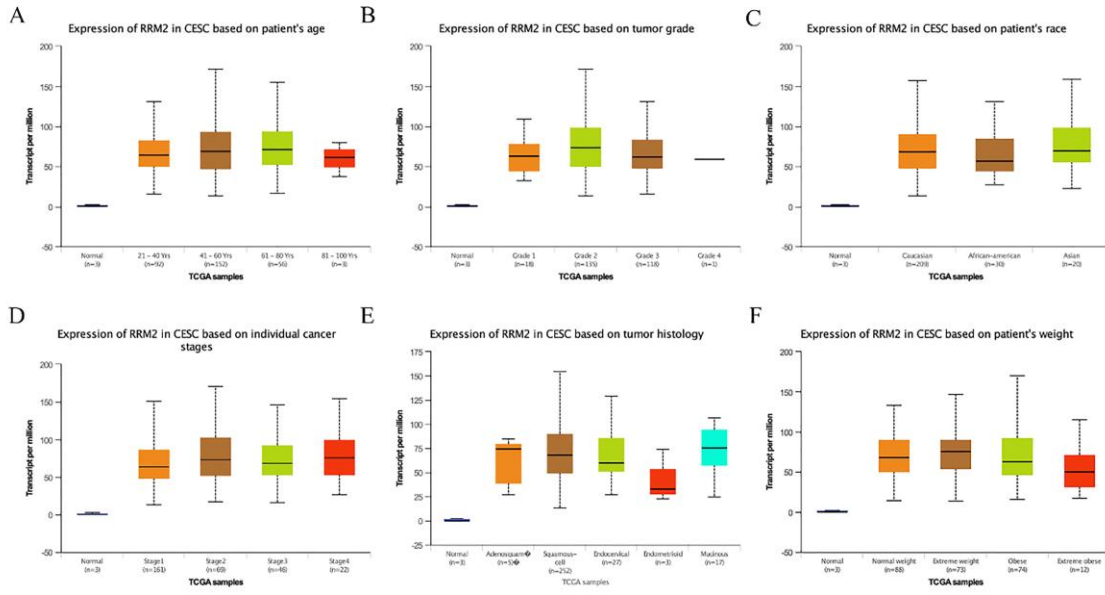
1 **Supplementary materials**

2 **Figure S1** RRM2 expression in cervical cancer patients stratified by age, tumor grade,
3 ethnic group, stages, histological type and weight. $P < 0.05$ was considered as
4 significant difference. (A) RRM2 expression distribution for age ($P > 0.05$); (B) RRM2
5 expression distribution for grade ($P > 0.05$); (C) RRM2 expression distribution for
6 ethnic group ($P > 0.05$); (D) RRM2 expression distribution for stage ($P > 0.05$); (E)
7 RRM2 expression distribution for histology ($P > 0.05$); (F) RRM2 expression
8 distribution for weight based on BMI (Body Mass Index). The expression of RRM 2 in
9 extreme weight was higher than extreme obesity ($P = 0.0224$).

10 **Figure S2** Sample clustering analysis and soft-thresholding values (β) estimation. (A)
11 Sample clustering to detect outliers indicated that no outliers were present that
12 required removal from the subsequent analysis. Branches of the dendrogram
13 represent together hub genes that are correlated positively. (B) The optimal soft-
14 thresholding (β) was determined as 5. The left panel displays the influence of soft-
15 thresholding power (x-axis) on the scale-free fit index (y-axis). The right panel shows
16 the influence of soft-thresholding power (x-axis) on the mean connectivity (degree,
17 y-axis).

18 **Figure S3** Clustering dendrograms of genes, with dissimilarity based on topological
19 overlap, together with assigned module colors. Additionally, the clustering diagram
20 and six effective modules with gene number more than 30 and screening based on
21 gene expression pattern are presented. WGCNA, Weighted Gene Co-Expression
22 Network Analysis.

23 **Figure S1**



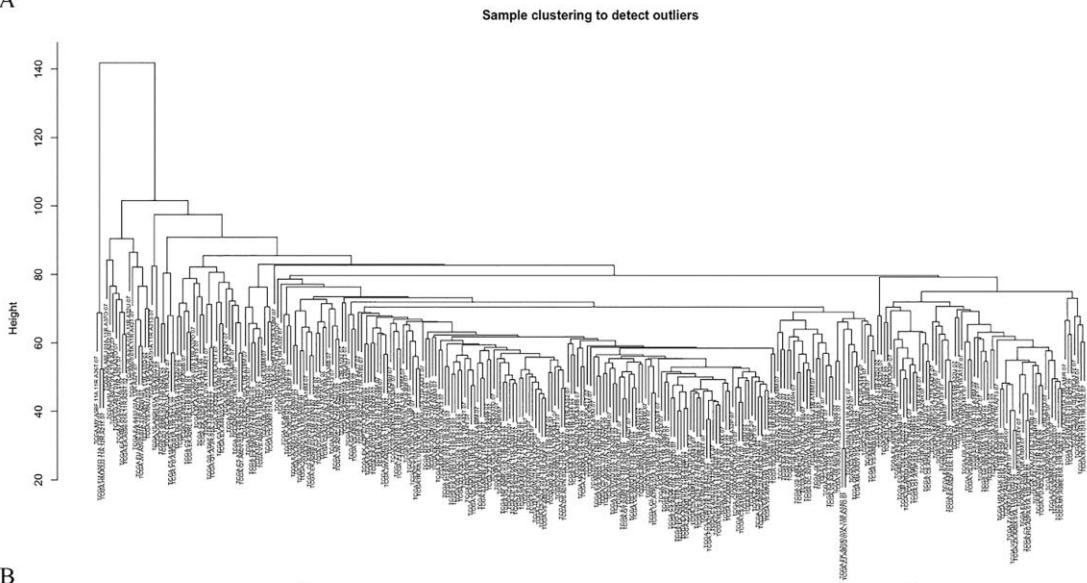
24

25 **Figure S2**

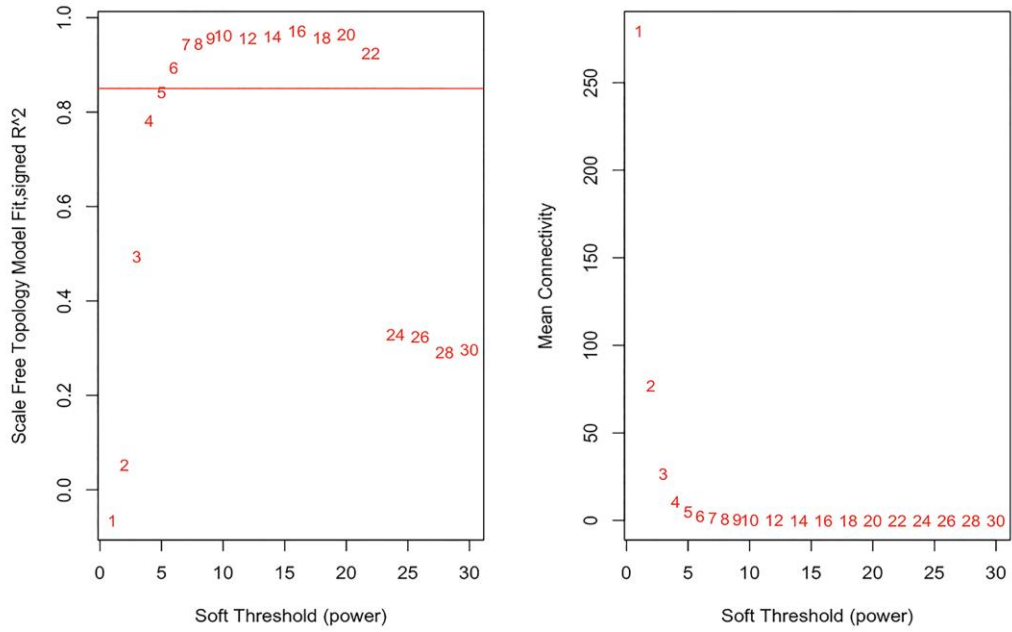
26

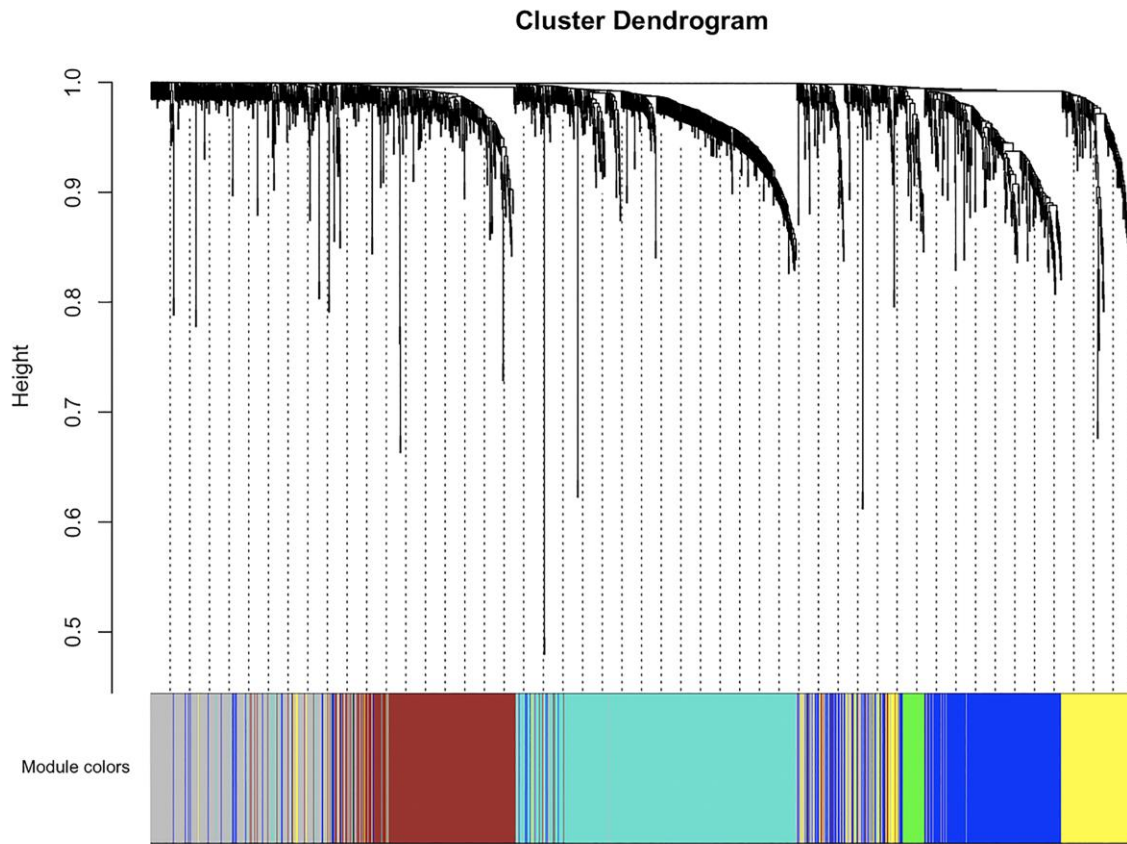
27

A



B





30

31